



## 15 Braemar Terrace

Horden, Co. Durham, SR8 4EP

**Offers In The Region Of £57,000**

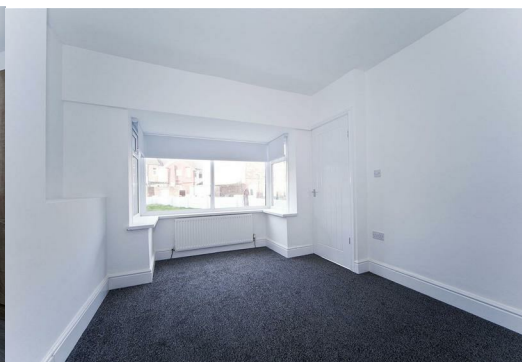


Situated on Braemar Terrace in Horden, Peterlee, this beautifully renovated two-bedroom house presents an excellent opportunity for first-time buyers or savvy investors alike meaning you can move in or let out without delay, making it an ideal choice for those looking to start their property journey.

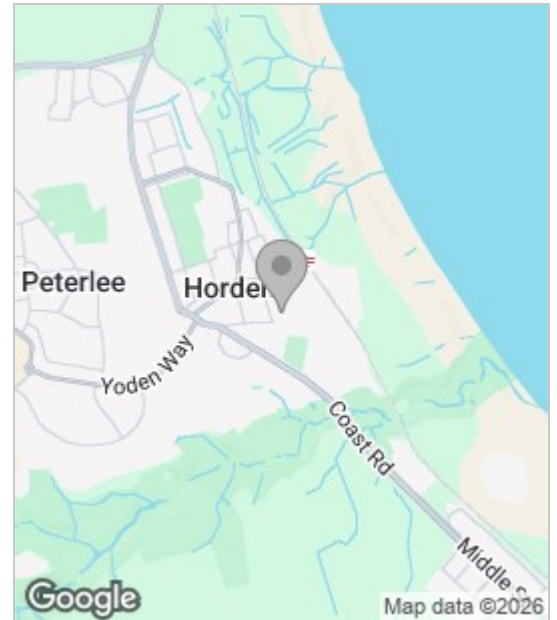
The property boasts a generous garden, perfect for outdoor relaxation or entertaining guests. Inside, you will find a modern and inviting space, enhanced by recent renovations that include new radiators, updated electrics, a stylish kitchen, and a contemporary bathroom. The fresh plastering and flooring, along with tasteful decorating, create a warm and welcoming atmosphere throughout.

Conveniently located near the train station, commuting to nearby towns and cities is a breeze, adding to the appeal for potential renters, with an achievable monthly rent of approximately £550. This property not only offers a comfortable living space but also represents a sound investment in a growing area.

Whether you are looking to make this your first home or seeking a rental property with great potential, this house on Braemar Terrace is a must-see. Don't miss the chance to secure a delightful residence in a well-connected location.



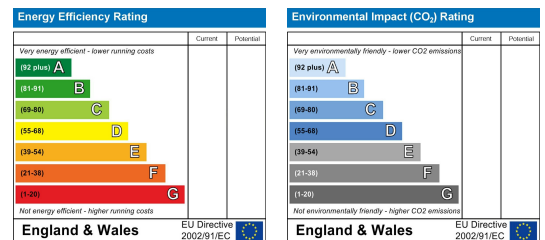
## Area Map



## Floor Plan



## Energy Efficiency Graph



These particulars, whilst believed to be accurate are set out as a general outline only for guidance and do not constitute any part of an offer or contract. Intending purchasers should not rely on them as statements of representation of fact, but must satisfy themselves by inspection or otherwise as to their accuracy. No person in this firm's employment has the authority to make or give any representation or warranty in respect of the property.